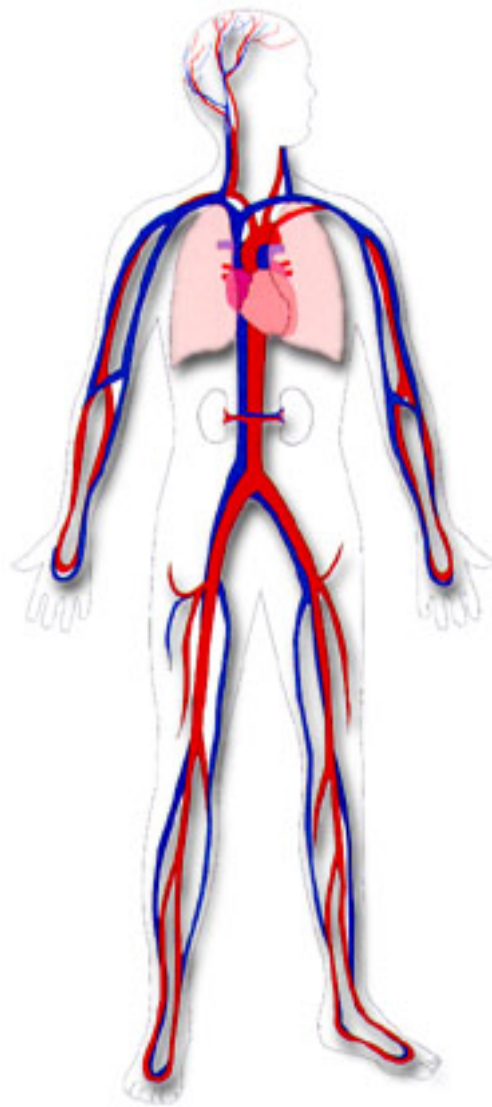


Cardiovascular System



Your heart and circulatory system make up your cardiovascular system. Your heart works as a pump that pushes blood to the organs, tissues, and cells of your body. If all the vessels of this network in your body were laid end-to-end, they would extend for about 60,000 miles (more than 96,500 kilometers), which is far enough to circle the earth more than twice!

In this diagram, the vessels that carry oxygen-rich blood are colored **red**, and the vessels that carry oxygen-poor blood are colored **blue**.